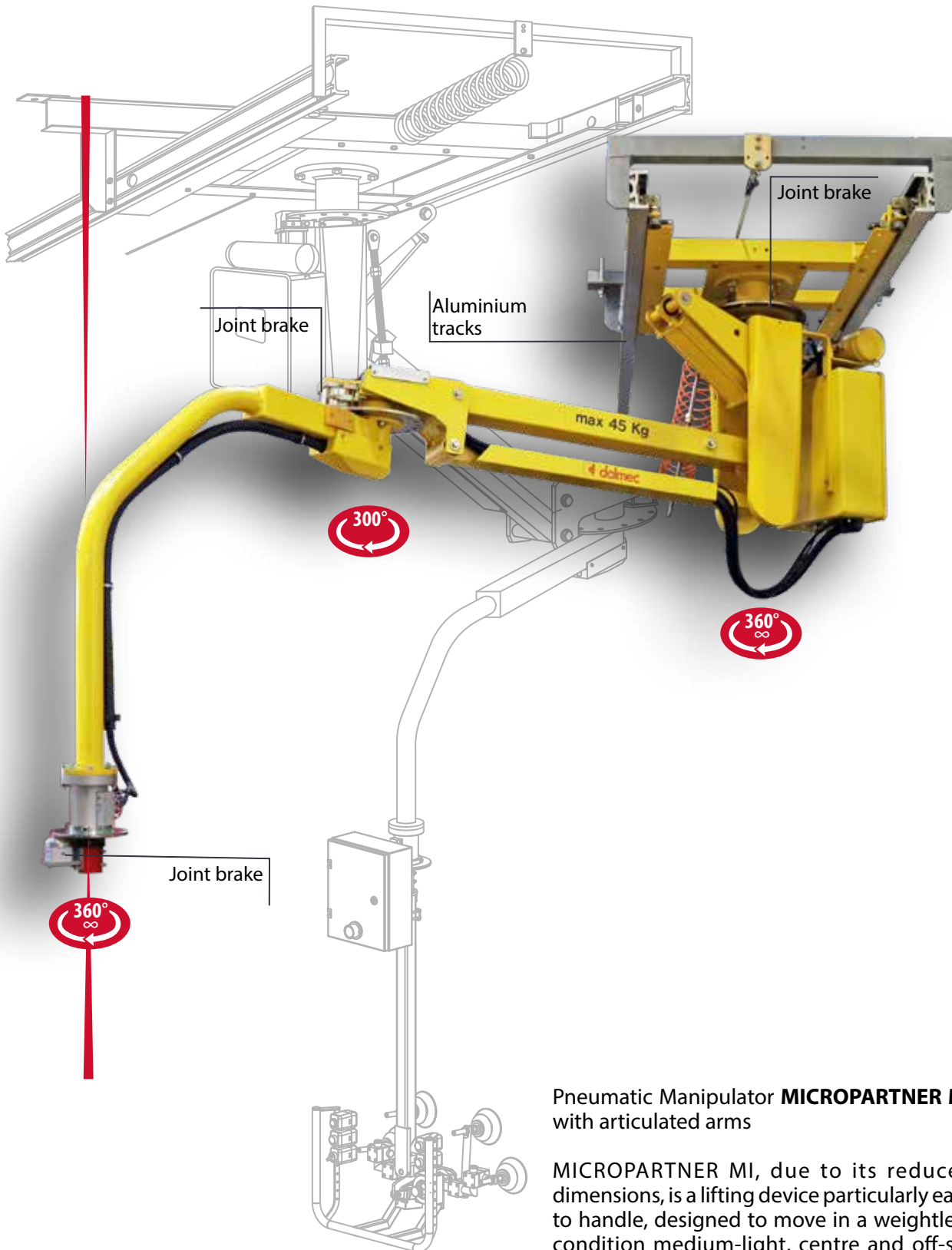




Industrial Manipulators



WEIGHT CAPACITY  
125 Kg



RADIUS  
2800 mm



PRESSURE  
0.7-0.8 Mpa



LOAD OFF-SET

VERTICAL LIFT  
1400 mm

VERSIONS  
COLUMN  
FIXED OVERHEAD  
RUNNING OVERHEAD

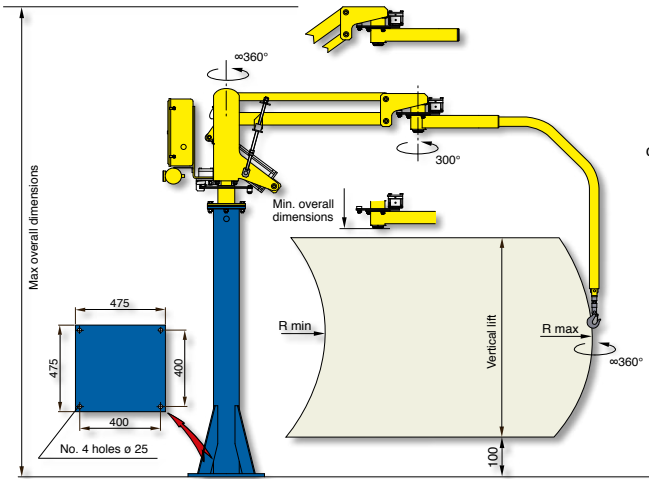
Pneumatic Manipulator **MICROPARTNER MI** with articulated arms

MICROPARTNER MI, due to its reduced dimensions, is a lifting device particularly easy to handle, designed to move in a weightless condition medium-light, centre and off-set loads in any direction.

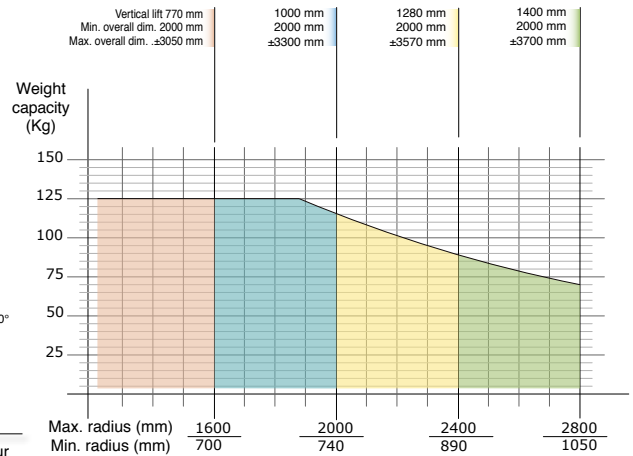
**MICROPARTNER<sup>®</sup> - MI**

# MICROPARTNER® - MI

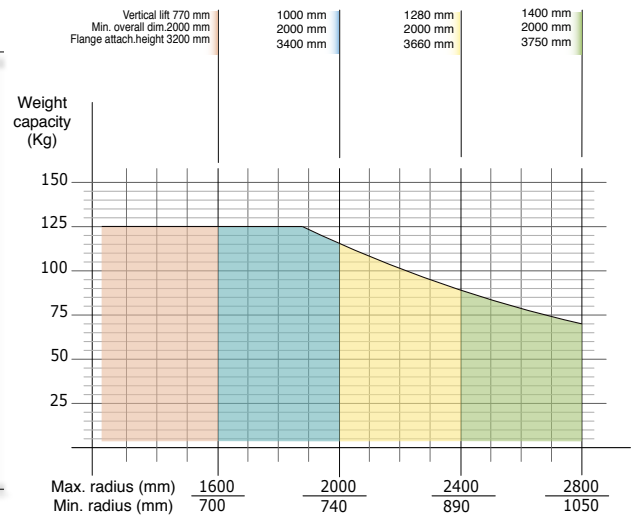
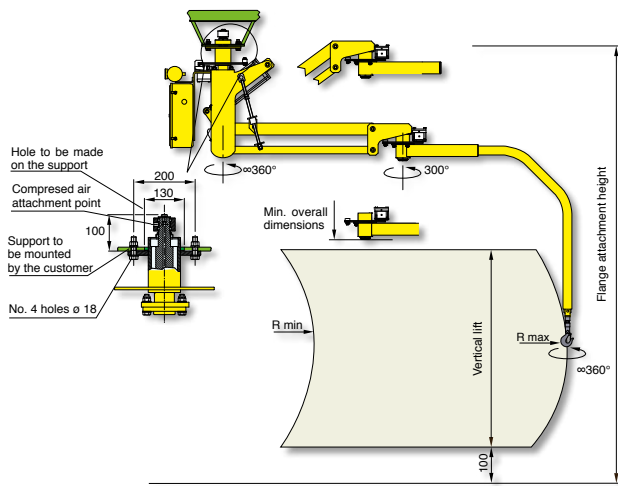
## Micropartner column mounted - MIC



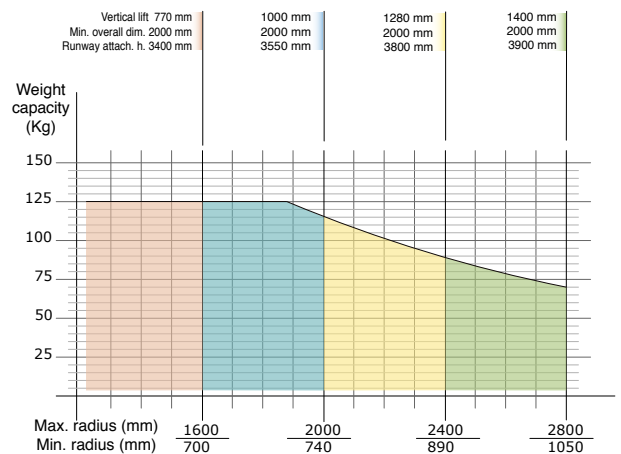
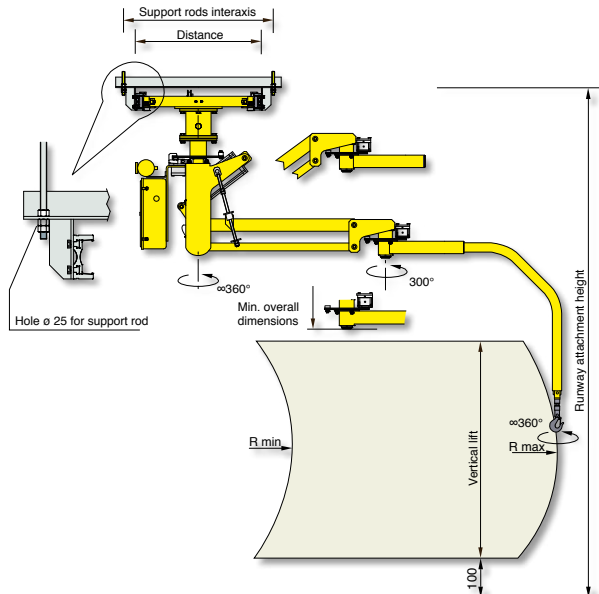
Structural versions: column mounted on fixed base-plate, autostable base-plate of our supply properly dimensioned or with autostable motorised trolley that translates on a simple profile track located on the floor.



## Micropartner overhead mounted - MIF



## Micropartner overhead trolley mounted - MIS



Air supply: Dry and oil-free compressed air min constant 0.7-0.8 MPa